

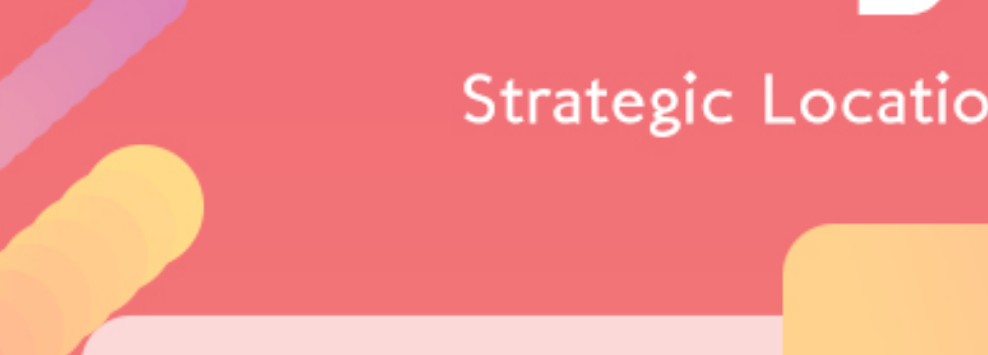
Up!

Λ $\bar{\Lambda}$.

KL Metropolis, **SANVA** offers an upmarket lifestyle many will envy.



Khai Chee is right opposite the residence – mere steps away.



A map snippet showing the location of Chong Hwa International High School. The school is marked with a graduation cap icon and labeled 'CHONG HWA INTERNATIONAL HIGH SCHOOL'. It is situated near the 'Segambut' area and the 'Lebuhraya Duta' (Duta Expressway). A blue line representing a road or transit route runs through the area, with a bus icon indicating a stop. Other labels include 'SUKSES' and 'HAI CHANG'.

 HOSPITAL KL
 INSTITUT JANTUNG NEGARA
 TAWAKKAL SPECIALIST HOSPITAL

CEMPAKA INTL
 LYCEE FRANCAIS KL
 FW
 KL CITY CENTRE
 NKVE HIGHWAY
 NKVE HIGHWAY

M LAND FCW

Sublot 5B D10 20130102770 (160299-A) | Address: Ground Floor, Wisma UTM, Jalan Yong Shook Lin, 46050 Petaling Jaya, Selangor Darul Ehsan | Tel: +603-8885 7188 Fax: +603-9782 9988 | Developer License No: 10221-02-028302650R | Validity 2023-2027, Approving Authority: Dewan Bandaraya Kuala Lumpur | Approved Building No: BPU 02C-2019-00129 | Tenure of Land: Freehold | Restriction in Interest: Nil | Land Encumbrances: Public Bank Mortgage, No on Units: Block A, 2 units with mortgage | Leasehold per unit: Selling Price: Block A: RM450,000 (Min) - RM1,035,000 (Max) Block B: RM457,000 (Min) - RM1,033,800 (Max) | Expected Completion Date: October 2024 | Bumiputera Discount: 3% | M, A, N, T, L, D, U, S, I, S, E, S, M, A, K, A, N, N, G, A, S, A | All tenders contained in this advertisement are artist's impression only. The information contained herein is subject to change without notice or notification may be required by the relevant authorities or developers' project may vary. Taken in providing this information, the owners, developers and managers cannot be held responsible for any variations. For avoidance of doubt on the open transactions, please always refer to the Sale and Purchase Agreement. Disclaimer: This information is provided to you as a guide only. It is not intended to be an offer for sale. This information contained in this brochure is subject to changes and cannot form part of an offer or contract.



SAVVY
RIANA DUTAMAS
FREEHOLD Multi-Gen Suites



AVANT- GARDE FACILITIES

Radical. Daring. Different. SAVVY facilities are leading-edge contemporary to pamper the senses while embracing green ethics and sustainability initiatives. A rejuvenation oasis amidst a bustling city just outside its doors.

LOWER GROUND

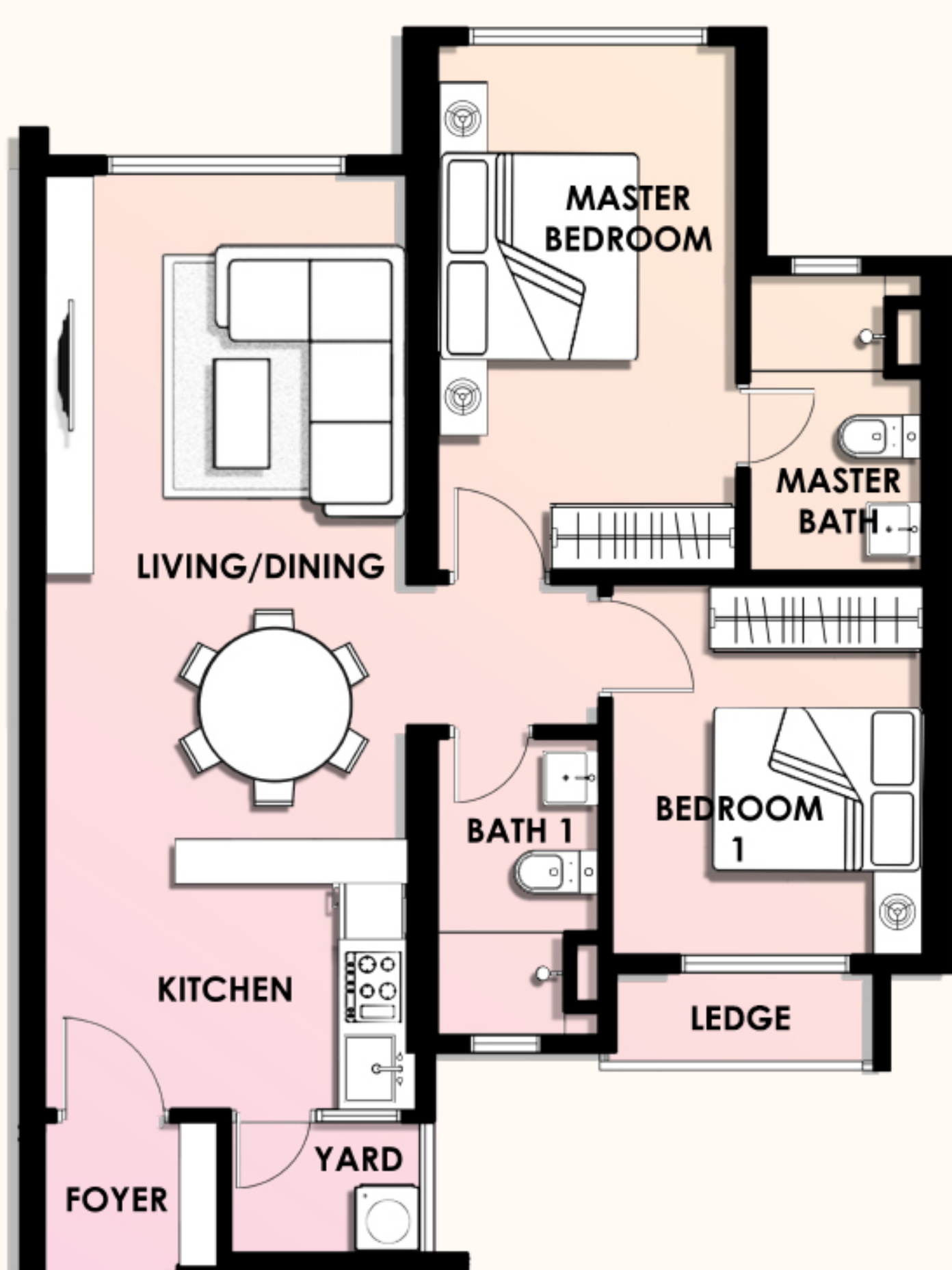
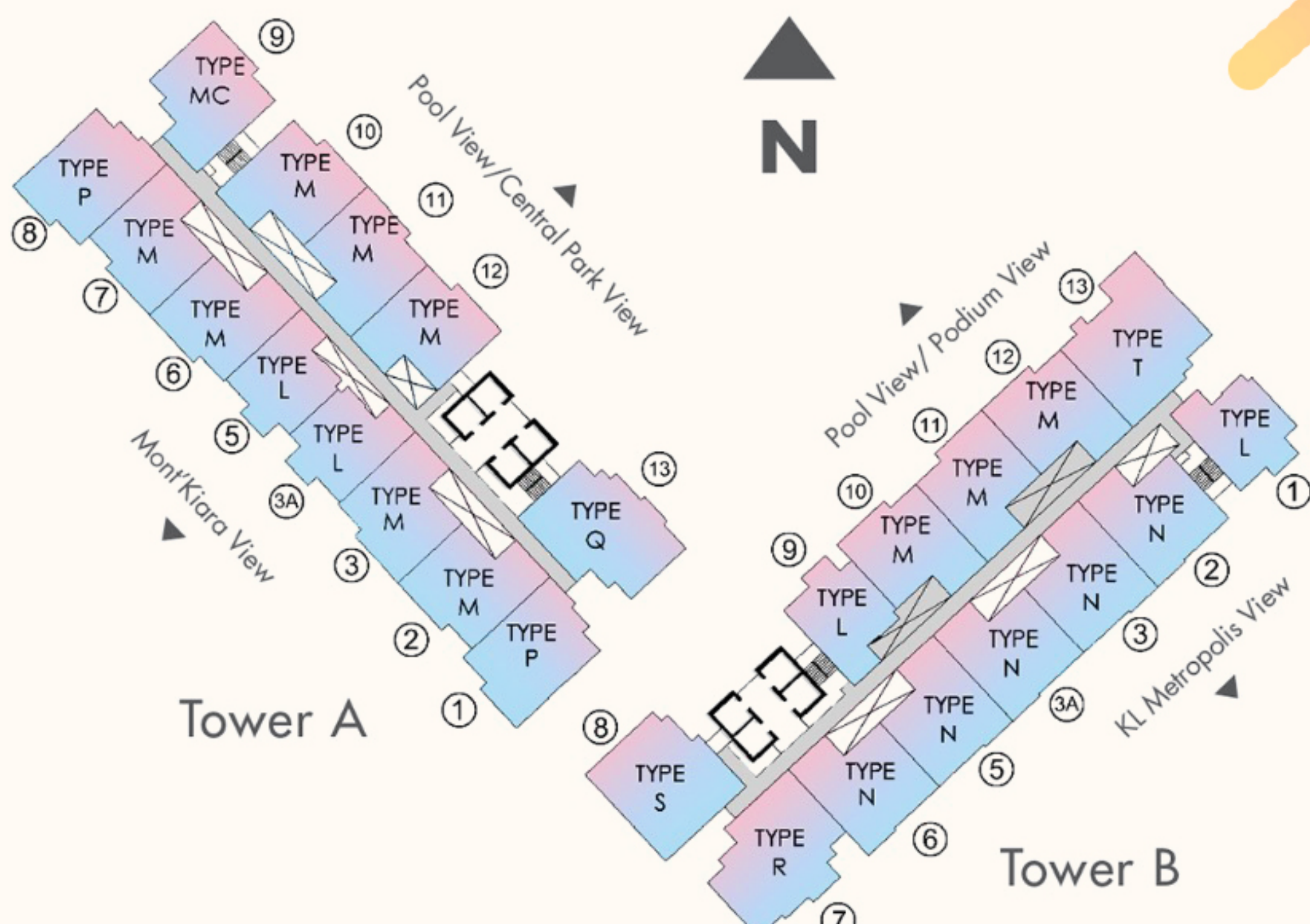
- 1 Arrival Plaza
- 2 Zen Garden
- 3 Reflexology Path
- 4 Fern Garden
- 5 Children Playground
- 6 Outdoor Lounge
- 7 Gymnasium / Featuring Dance & Yoga Studio (Ground Floor)

PODIUM FLOOR (LEVEL 5)

- 1 Swimming Pool
- 2 Jacuzzi
- 3 Kid's Pool
- 4 Floating Deck
- 5 Pool Deck
- 6 Aromatic Garden
- 7 BBQ Deck
- 8 Changing Room & Sauna
- 9 Multipurpose Hall/ Featuring Indoor Badminton Court
- 10 Multipurpose Lawn
- 11 Multipurpose Court
- 12 Reflexology Path
- 13 Outdoor Study Corner
- 14 Herbs Garden
- 15 Hammock Garden
- 16 Casual Gathering Corner



KEY PLAN



TYPE L

722 sq. ft
2 Bedrooms
2 Bathrooms

Tower A + B



TYPE M

911 sq. ft
3 Bedrooms
2 Bathrooms

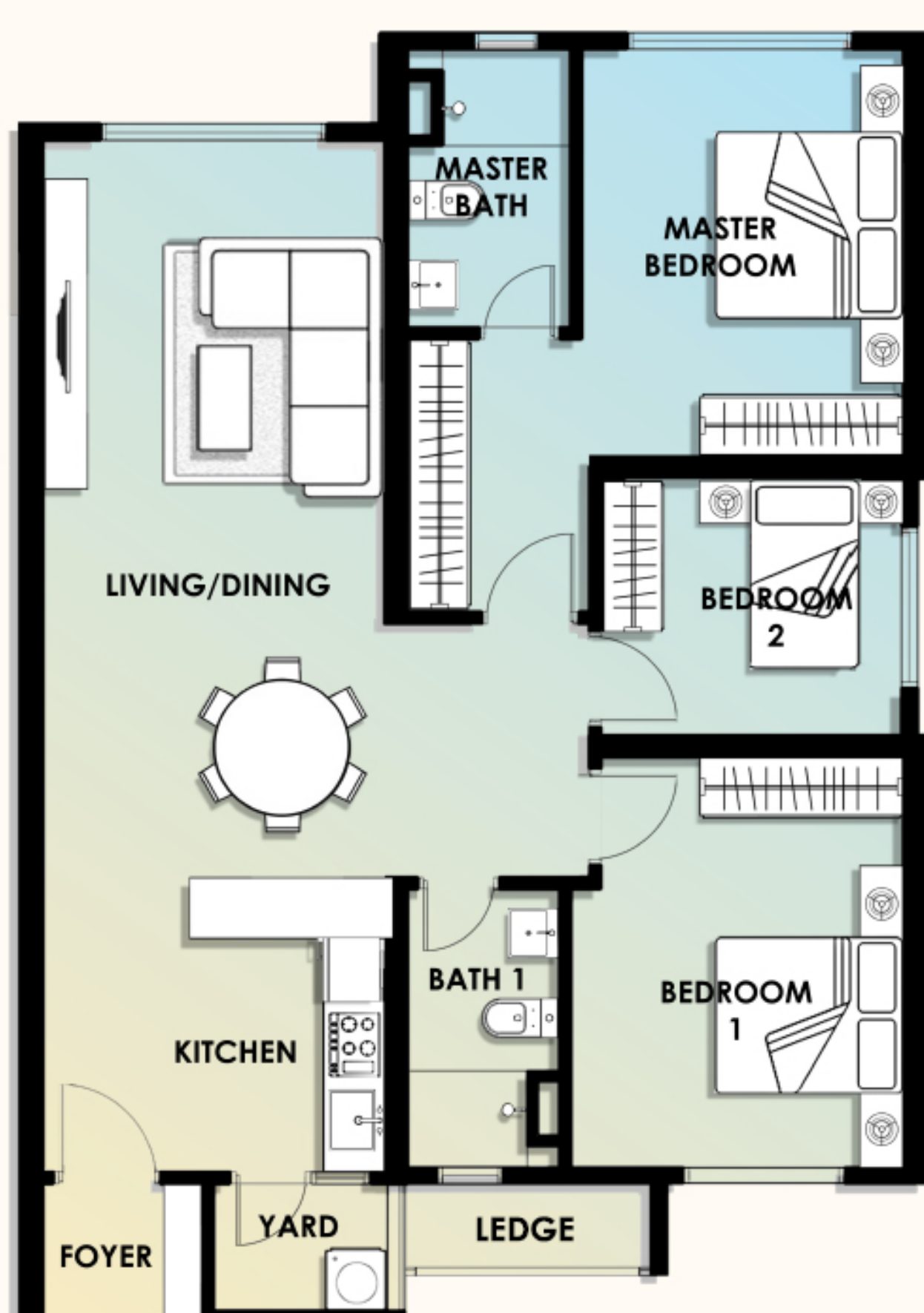
Tower A + B



TYPE MC

911 sq. ft
3 Bedrooms
2 Bathrooms

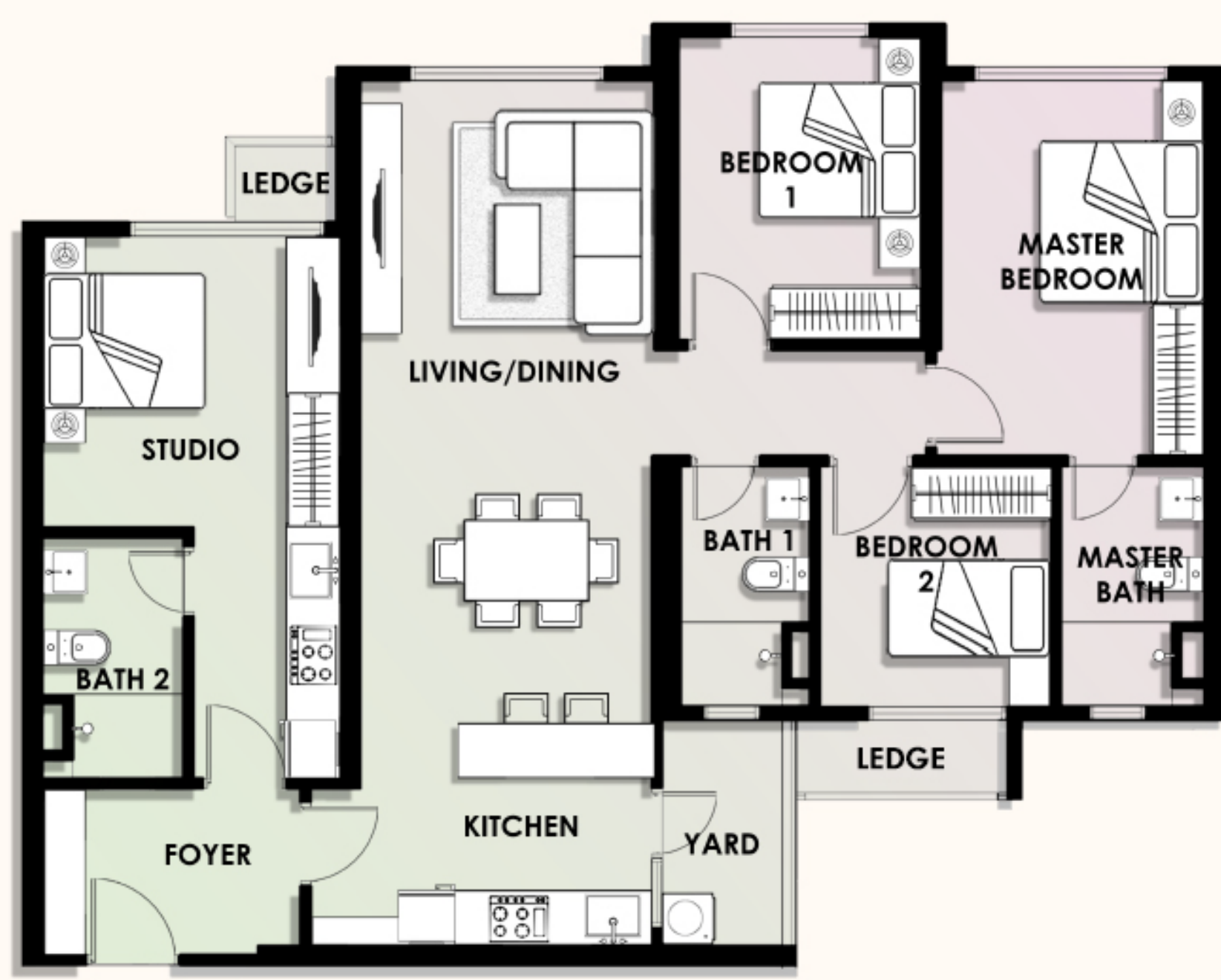
Tower A



TYPE P

953 sq. ft
3 Bedrooms
2 Bathrooms

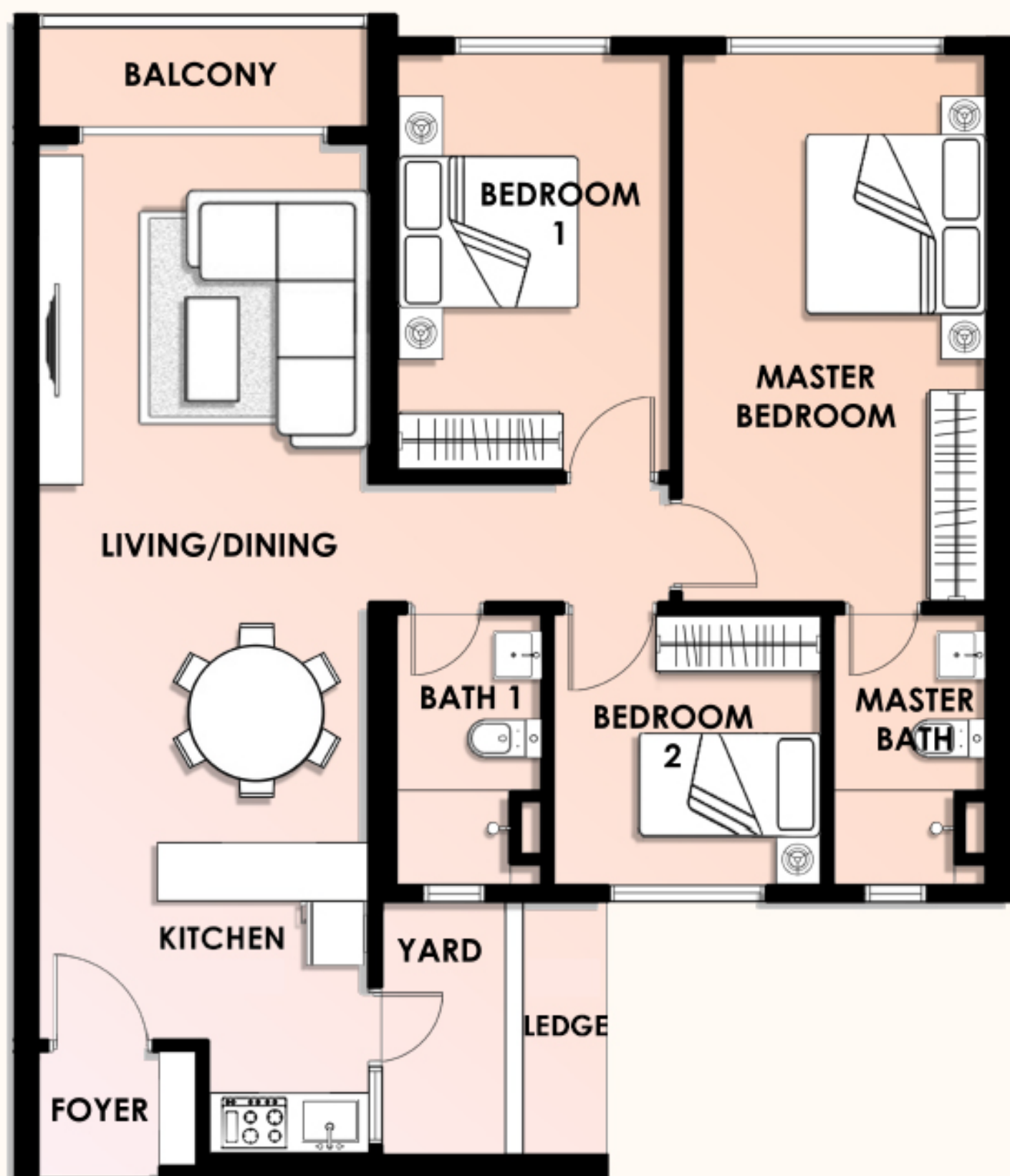
Tower A



TYPE Q

1,125 sq. ft
3 Bedrooms
2 Bathrooms
1 Studio
(Dual-Key)

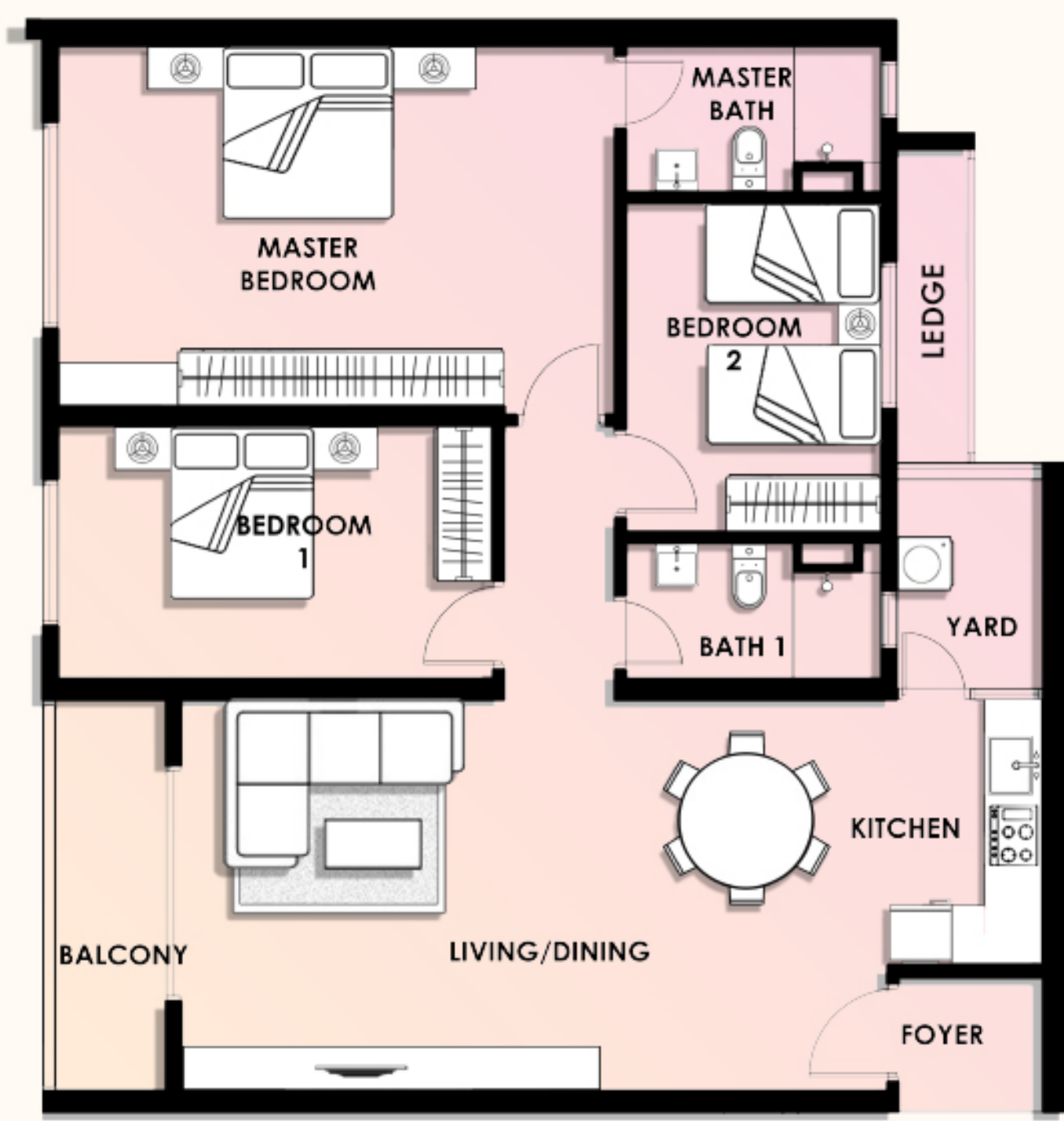
Tower A



TYPE N

951 sq. ft
3 Bedrooms
2 Bathrooms

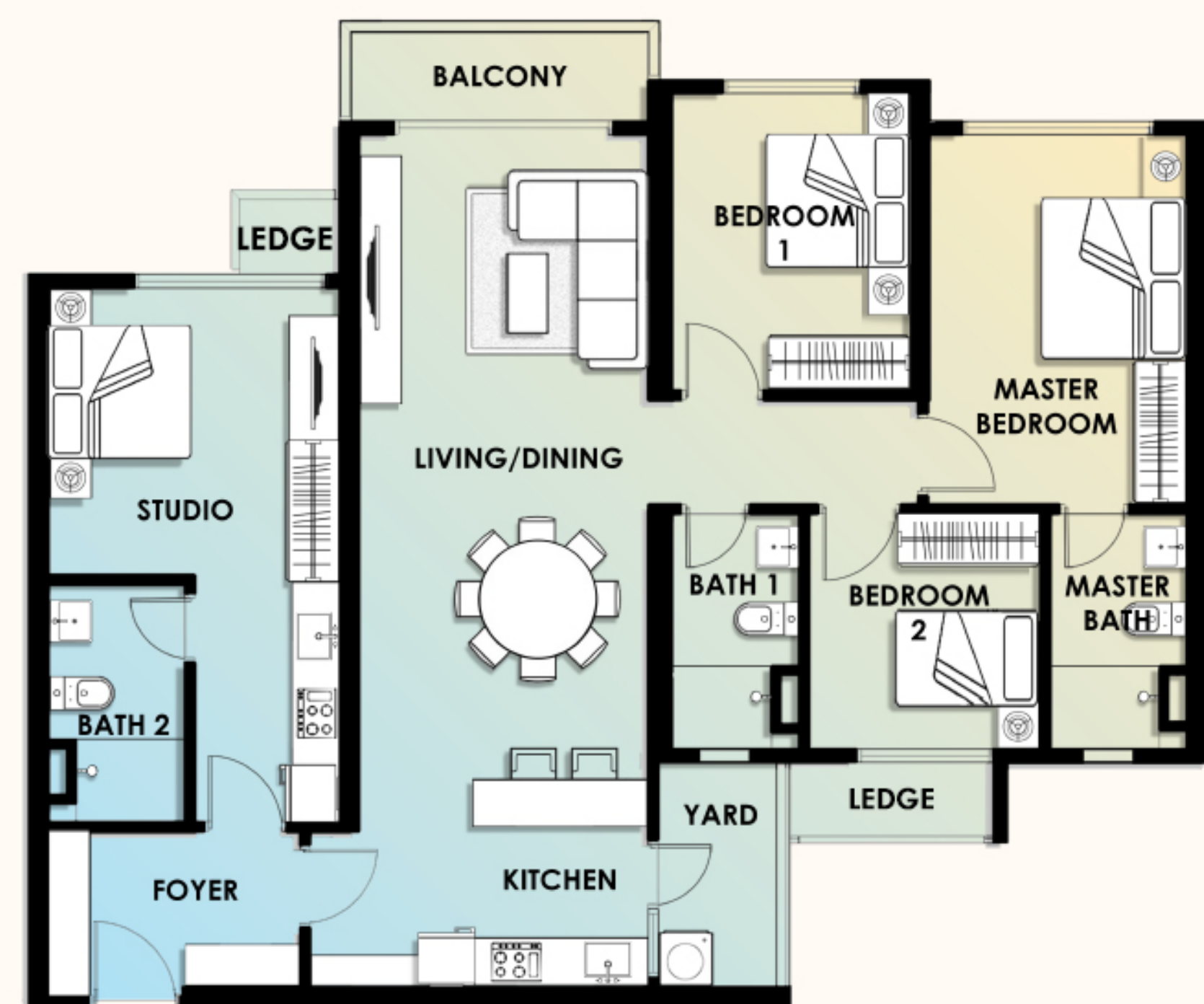
Tower B



TYPE S

1,121sq. ft
3 Bedrooms
2 Bathrooms

Tower B



TYPE R

1,166 sq. ft
3 Bedrooms
2 Bathrooms
1 Studio
(Dual-Key)

Tower B



TYPE T

1,232 sq. ft
3 Bedrooms
2 Bathrooms
1 Studio
(Dual-Key)

Tower B

SPECIFICATIONS

| | | | | | | | | | | | |
|----------------|--|------------------------------|--------|--------|---------|--------|--------|--------|--------|--------|--------|
| Structure | Reinforced Concrete | Sanitary & Plumbing Fittings | Type L | Type M | Type MC | Type N | Type P | Type Q | Type R | Type S | Type T |
| Wall | Reinforced Concrete/Masonry | Water Closet | 2 | 2 | 2 | 2 | 2 | 3 | 3 | 2 | 3 |
| Roof Covering | Reinforced Concrete Flat Roof | Wash Basin with Tap | 2 | 2 | 2 | 2 | 2 | 3 | 3 | 2 | 3 |
| Roof Framing | Reinforced Concrete | Hand Bidet | 2 | 2 | 2 | 2 | 2 | 3 | 3 | 2 | 3 |
| Ceiling | Plasterboard & Paint/Skim Coat & Paint | Shower Head | 2 | 2 | 2 | 2 | 2 | 3 | 3 | 2 | 3 |
| Windows | Powder Coated Aluminum Framed Glass Window | Tap (Yard) | 1 | 1 | 1 | 1 | 1 | 1 | 1 | 1 | 1 |
| Doors | Timber Door Aluminum Frame with Glass Sliding Door* (For Type S, Type R and Type N only) | Electrical Installation | | | | | | | | | |
| Ironmongery | Quality Locksets | Distribution Board | 1 | 1 | 1 | 1 | 1 | 1 | 1 | 1 | 1 |
| Wall Finishes | Porcelain Tiles Ceramic Tiles Skim Coat & Point Cement Render & Paint | Lighting Point | 12 | 13 | 13 | 14 | 14 | 17 | 18 | 14 | 19 |
| Floor Finishes | Ceramic Tiles Porcelain Tiles | Kitchen Point | 8 | 9 | 9 | 9 | 9 | 12 | 12 | 9 | 12 |
| | | Water Heater Point | 1 | 1 | 1 | 1 | 1 | 1 | 1 | 1 | 1 |
| | | Ceiling Fan Point | 3 | 4 | 4 | 4 | 4 | 5 | 5 | 4 | 5 |
| | | Air-Conditioner Point | 3 | 4 | 4 | 4 | 4 | 5 | 5 | 4 | 5 |
| | | SMATV Point | 1 | 1 | 1 | 1 | 1 | 2 | 2 | 1 | 2 |
| | | Door Bell Point | 1 | 1 | 1 | 1 | 1 | 1 | 1 | 1 | 1 |
| | | Fiber Wall Socket | 1 | 1 | 1 | 1 | 1 | 1 | 1 | 1 | 1 |
| | | Data Point | - | - | - | - | - | 2 | 2 | - | 2 |
| | | SOHO Box | - | - | - | - | - | 1 | 1 | - | 1 |